

SOHO & Residential Services effective 7/1/2005

System Installation*

Single machine	\$25.00
Multiple machines - fewer than 5	\$20.00 per computer
Multiple machines - 5 or more	\$17.50 per computer

Network Installation**

Internet gateway (Cable/DSL modem)	\$25.00
Residential LAN - Wired/Wireless	\$35.00 per connection
Wireless LAN bridge	\$40.00

Software Installation†

Windows® operating system	\$35.00
General application installation	\$15.00 per application / suite

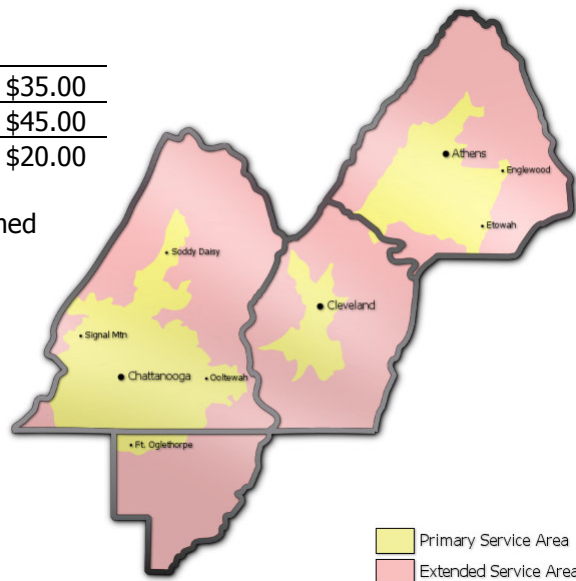
System Repair / Maintenance

Malware/Virus removal (w/ installation of security apps)	\$25.00 hourly‡
General installation/repair/replacement	\$25.00 hourly‡
Operating system recovery†	\$35.00 hourly‡

On-Site Service Call Fees§

Primary Service Area	\$35.00
Extended Service Area	\$45.00
After-Hours Surcharge (10pm-6am)	\$20.00

All prices above apply to services performed on the job site, with prior appointment.



* Prices include connection to an internet gateway or existing LAN/WLAN. Customized software setup not included.

** Prices do not include the cost of hardware, with the exception of up to 5m (16ft) of Ethernet wiring.

† Customers must provide their own valid software license key/serial number. We do NOT support software piracy!

‡ Customers are charged for the first hour regardless of duration. Billed in 15 minute increments thereafter.

§May also be considered pickup fees -- a delivery fee of one-half the pickup cost will be applied when applicable.